

# I LOVE *Fall* MOST OF ALL!

## Deb Strain



I genuinely enjoy each season as it changes here in Ohio. But I have to say "I LOVE FALL MOST OF ALL!" The crispness in the air, visits to orchards, vibrant colors, and of course, pumpkins everywhere, make it an incredible season! In this, my newest fall collection, I have revisited the fresh color palette that I used in "Harvest Wishes" that did so well. Soft, warm pumpkin oranges, muted aquas, and a deep, rich "Harvest Night Sky" blue are all included in the color palette. Filled with autumn pumpkins, mums, and beautiful foliage, "I Love Fall" captures all of the things that I love best about the season in a fresh, pretty way!





56147 11



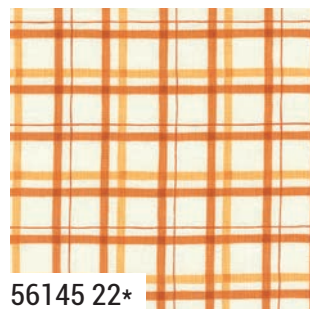
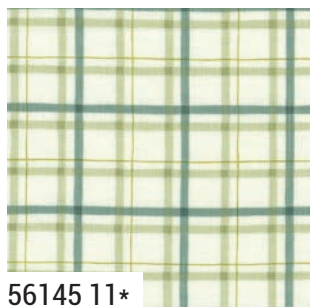
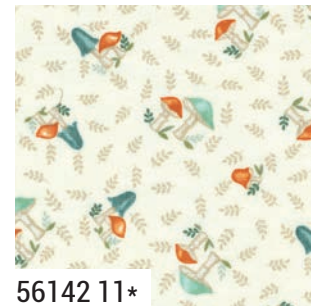
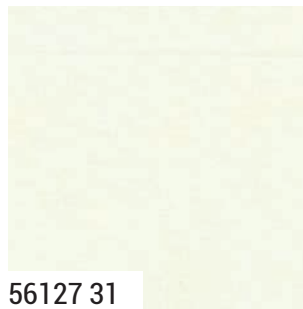
56147 15

Panel Size: 24" x 44"





I LOVE *Fall* MOST OF ALL! Deb Strain



*moda* JULY DELIVERY



# I LOVE *Fall* MOST OF ALL! Deb Strain



56142 13\*



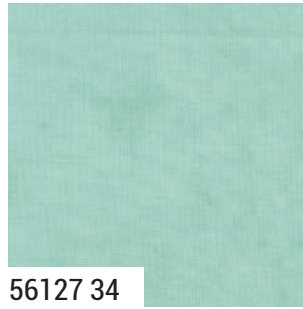
56144 13\*



56141 13\*



56140 14\*



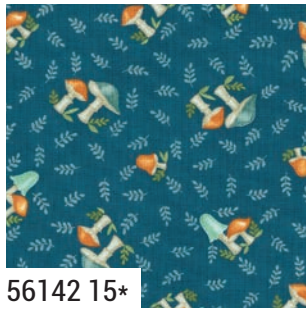
56127 34



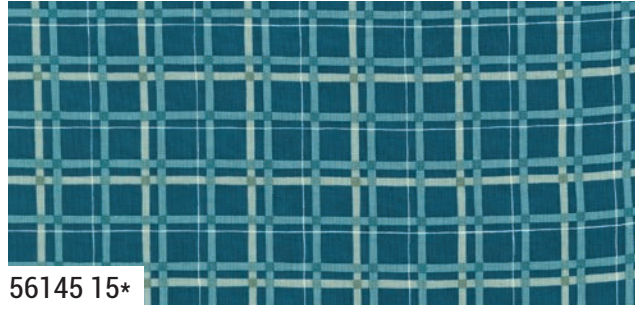
56143 13



56144 15\*



56142 15\*



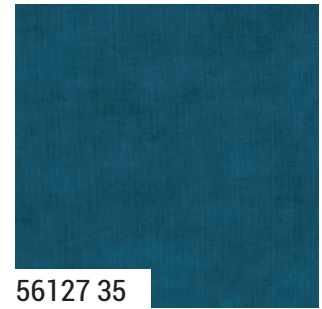
56145 15\*



56140 15\*



56143 15\*



56127 35



56141 15\*

56140

Asst.  
15

Asst.  
10

Low Cal  
10

AB

JR

LC

MC

PP

JULY DELIVERY

•27 Prints •100% Premium Cotton

AB includes 26 skus with 1 panel 56147-11 cut 24" x 44". JRs, LCs, MCs & PPs include 25 skus with two each of 56140-56142, 56144 & 56146 no panels.



# I LOVE *Fall* MOST OF ALL! Deb Strain

Patterns by Coach House Designs



CHD 2452 Fall is in the Air 42" x 54"



CHD 2450 Pumpkin Parade 58" x 69"



CHD 2449 Pumpkin Yoga 59" x 66"



CHD 2451 Autumn Owls 68" x 78"





**DLL 252** Framed Panel 60" x 76"  
by Designs by Lavender Lime



**WS 94** Gourd-geousness 58" x 72"  
by Wendy Sheppard



**SS 501** Nora 60" x 80"  
by Splendid Speck



**ISE 310** Cider Season 56" x 56"  
by It's Sew Emma