

Le Pavot

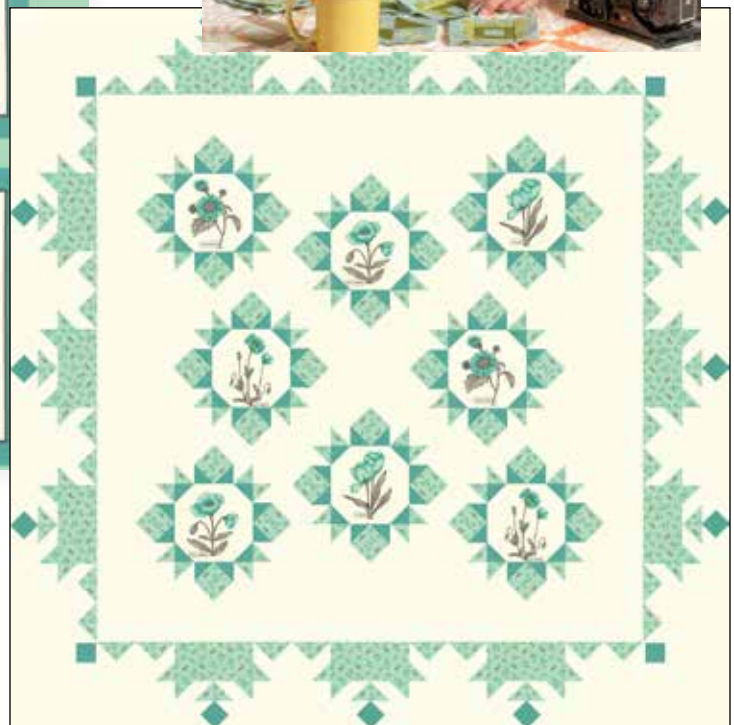
Sandy Gervais

I have always loved botanical drawings. From the fine details of the drawings to the beautiful shading in the colored renderings. As an artist, I love that among the most accomplished botanical artists in history are several women – Margaret Flockton, Maria Sybillia Merion and Elizabeth Blackwell.



17970 14

Panel measures 24" X 44".
Each squares is approx. 8.25
not including border



PH 699/PH 699G Le Pavot 74" x 74"
See pattern for additional color options



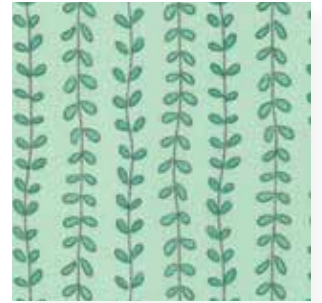
17972 14



17973 14



17974 14



17975 24



17976 14



PH 702/PH 702G Square Dance 93" x 93"



17979 15



17971 21



17978 25

moda



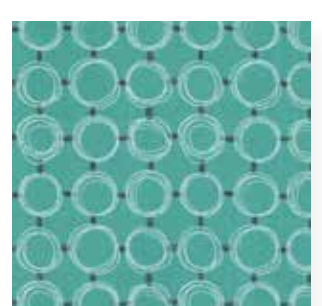
17974 16



17976 16



17978 27

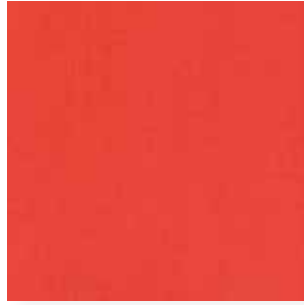


17976 15

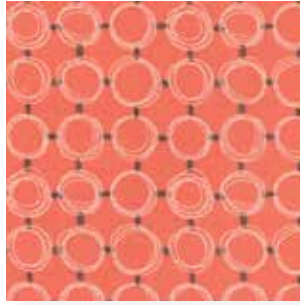
Le Pavot *Sandy Gervais*



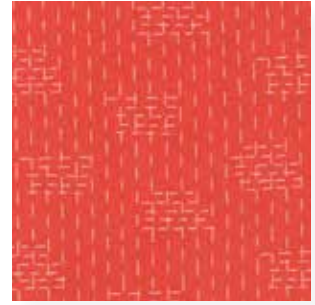
17972 13



17979 12



17976 12



17978 22



17973 13



17974 13



17975 23



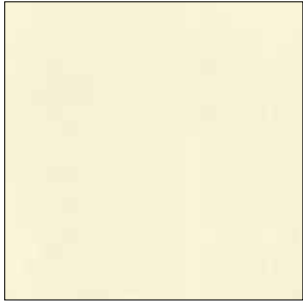
17971 13



17970 13



PH 700/PH 700G Circular Motion 81"x 81"



17979 11



17971 11



17974 11



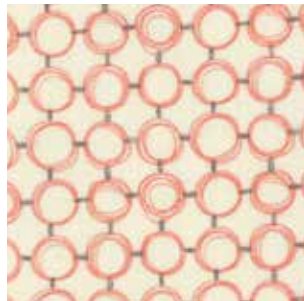
17972 11



17973 11



17975 12



17976 11

PH 701/PH 701G

Gated Community 26"x 26"



BOM

PH 703/PH 703G All Things Red 80"x 80"



17970 11

17970

Asst. 15

Asst. 8

AB

JR

LC

MC

PP

• 30 Prints

• 100% Premium Cotton

Precuts do not contain Panels. JR's, LC's, MC's and PP's include two each of 17972, 17974, 17978 and 17976-11, 12 & 15

NOVEMBER DELIVERY