

moda



Size: 80" x 92½"

*Eliza's Indigo 1810-1830*  
by Betsy Chutchian



Betsy Chutchian

# Eliza's Indigo 1810-1830

Finished Size: 80"x 92½"      Block Size: 6"x 6"

moda

## Quilters Basics

Read instructions before beginning a project.

All instructions include a scant ¼" seam allowance.

Press as you go. Press seams in one direction.

WOF = Width of Fabric • LOF = Length of Fabric

## Cutting

Label and sort pieces as they are cut.

If you are using Moda KIT31500 skip directions in red.

The kit includes 110 pre-cut 7" and 10-10" squares.

Fabrics 1 and 2

From each fabric:

Cut 1 – 7"xWOF strip; cut into 5-7"x7" squares for half square triangles.

Cut 1 – 10"xWOF strip; cut into 4-10"x10" squares.

Cut all 4 – Fabric 1 squares twice diagonally for setting triangles

Cut 3 – Fabric 2 squares twice diagonally. From the remaining 10" square cut 1-5¼"x5¼" square; cut once diagonally for corner triangles

Fabrics 3 thru 22

From each fabric:

Cut 1 – 7"xWOF strip; cut into 5-7"x7" squares for half square triangles.

Fabric 23

Cut 2-10"x10"squares; cut the squares twice diagonally for setting triangles.

Fabric 24

Cut 2¼" bias strips to yield 365" of bias binding.

Fabric 25

Note: Moda KIT includes 2 pieces. No cutting is necessary.

Cut border fabric yardage into 2 pieces – 1¼ yds and 2½ yards.

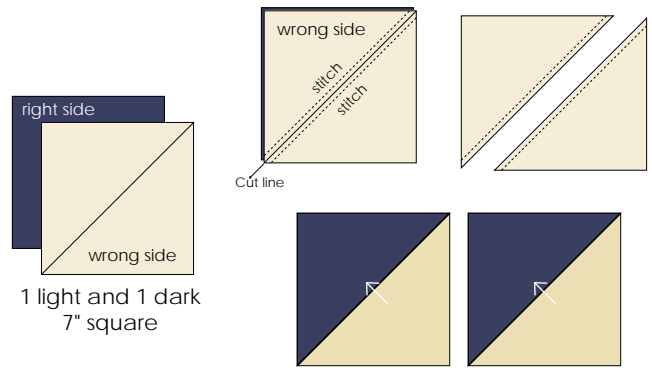
Cut the 1¼ yd piece in half at the fold – to make 2-22"x45" border strips. Set aside.

## Construction

### Half Square Triangles – Make 110

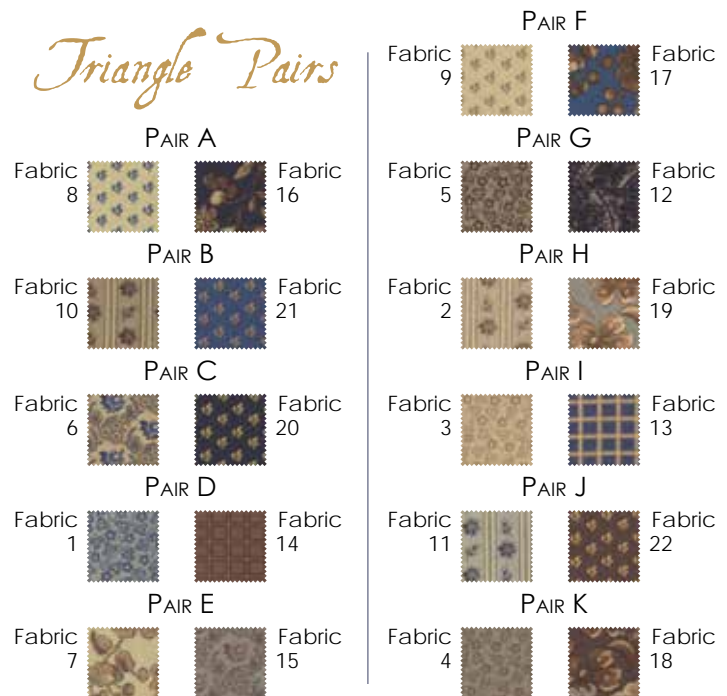
- Using a mechanical pencil draw a diagonal line on the wrong side of the 55 light 7" squares from Fabrics 1-11.
- Select one of the 55 dark 7" squares from Fabrics 12-22 and pair with a marked square from Step 1. Listed at right are the pairs that we selected. Use these combinations or mix and match your own pairs for a one of a kind quilt.

- With right sides together align edges and then stitch on both sides of the marked line using a **scant** ¼" seam.
- Cut on marked line to make 2 half square triangle blocks. Press toward arrow.
- Trim half square triangle blocks to measure 6½"x6½" with seams.
- Repeat Steps 3-5 to make 110 – 6½"x6½" half square triangle blocks. One hundred and four are required to complete this quilt. There will be 6 extras.



Make 110 Half Square Triangle Blocks

## Triangle Pairs



## Assembly

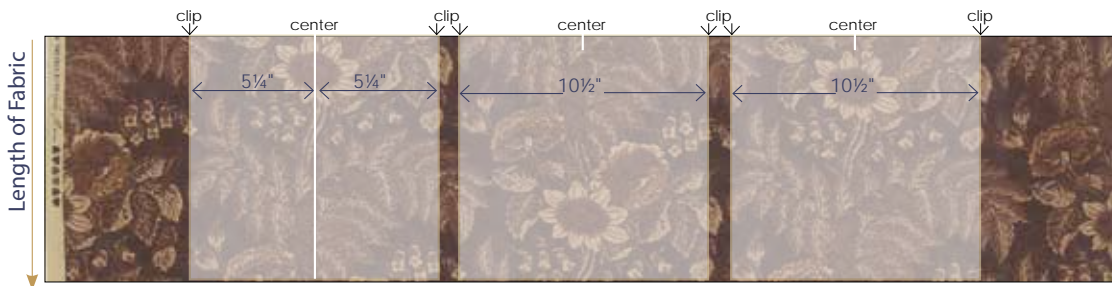
Quilt is pieced on the diagonal.

*This quilt will be most successful if you lay out and arrange all rows before beginning to assemble quilt top.*

1. Refer to diagram and cover photo for fabric placement in each row.
2. Press rows in direction of arrows.
3. *Note: Setting triangles and corner triangles are slightly oversized.*  
Trim away excess leaving a  $\frac{1}{4}$ " seam allowance before adding the outer border.

## Outer Border

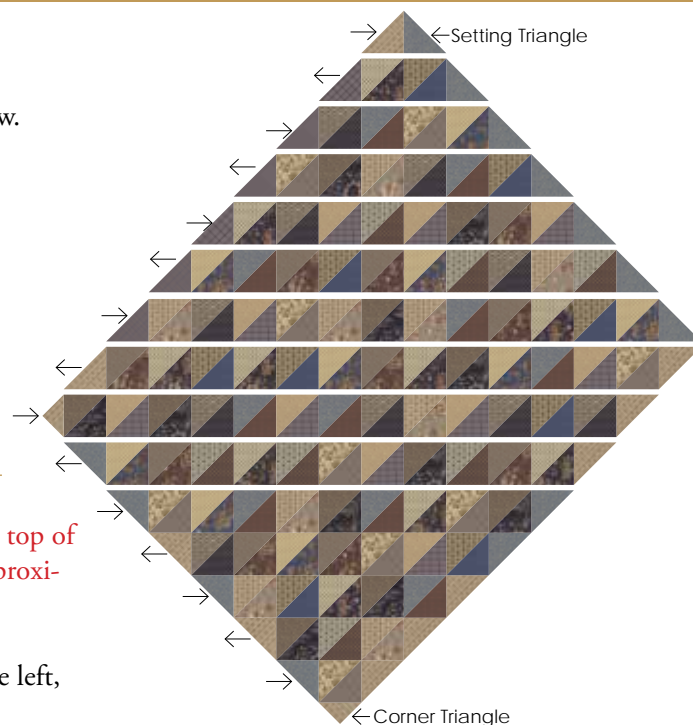
1. **Matching the motifs, sew one of the 22"x45" border strips to the top of the second 22"x45" border strip.** Pieced strip should measure approximately 22"x 82". Press seam open. Set pieced strip aside.
2. With the white printed selvage of the  $2\frac{1}{2}$  yard border piece on the left, move to the right and mark the center of the 3 sunflower motifs.



3. Measure  $5\frac{1}{4}$ " on each side of the marked center. Clip fabric at both points to create a  $10\frac{1}{2}$ " wide outer border strip. *See diagram above.*
4. Tear the clipped fabric down the lengthwise grain of the fabric to make 3 –  $10\frac{1}{2}$ " x 90" border strips. Press strips.
5. Kit users repeat Steps 3 & 4 with the 22"x90" border fabric piece to create the 4th border. **If not using the Moda KIT repeat Steps 3 & 4 with the pieced border strip to make the fourth  $10\frac{1}{2}$ " border.** Use this border strip on the side of the quilt.  
***Note: You will need to stop tearing and cut the seam allowance with scissors. Then continue tearing the length of the pieced fabric.***
6. Measure length of quilt top from top to bottom through center of quilt. *See hint above before cutting.*
7. Cut the **pieced border** strip and one additional strip to that measurement and add to opposite sides of quilt top.

## UNITS NEEDED TO ASSEMBLE QUILT:

- 104 Half Square Triangle Blocks
- 29 Assorted Setting Triangles • 2 Corner Triangles



**HINT:** *Since there is a little extra length in the border strips, you might wish to audition each border for the best placement of the sunflower motif before cutting the final border lengths.*

Stitch one side border with floral motif going up and the other going down. The floral motif is designed to "chase" around border of the quilt. Press.

8. Measure width of quilt top from side to side including outer border strips.
9. Cut remaining 2 border strips to that measurement and, noting direction of floral motif, add to top and bottom of quilt top. Press.

Quilt should measure approximately 80" x 92 $\frac{1}{2}$ " with seams.

## Finishing

Using a bias seam, join the  $2\frac{1}{4}$ " bias strips end to end. Press seams open. Fold prepared strip in half wrong sides together and gently press to make the binding.

Layer, Quilt and Bind

*moda*

# Eliza's Indigo

1810-1850

Finished Size: 80"x 92½"

by Betsy Chutchian

## Fabric Requirements:

If you are not using Moda Kit 31500 the following are the yardage requirements for this quilt.

FABRIC #1-½ yd  
Half Sq. & Setting  
Triangles  
31501-16



FABRIC #2-½ yd  
Half Sq. Triangles  
31507-17



FABRIC #3-¼ yd  
Half Sq. Triangles  
31501-17



FABRIC #4-¼ yd  
Half Sq. Triangles  
31501-19



FABRIC #5-¼ yd  
Half Sq. Triangles  
31501-21



FABRIC #6-¼ yd  
Half Sq. Triangles  
31504-13



FABRIC #7-¼ yd  
Half Sq. Triangles  
31505-17



FABRIC #8-¼ yd  
Half Sq. Triangles  
31506-23



FABRIC #9-¼ yd  
Half Sq. Triangles  
31506-25



FABRIC #10-¼ yd  
Half Sq. Triangles  
31507-12



FABRIC #11-¼ yd  
Half Sq. Triangles  
31507-16



FABRIC #12-¼ yd  
Half Sq. Triangles  
31500-11



FABRIC #13-¼ yd  
Half Sq. Triangles  
31502-11



FABRIC #14-¼ yd  
Half Sq. Triangles  
31502-12



FABRIC #15-¼ yd  
Half Sq. Triangles  
31504-18



FABRIC #16-¼ yd  
Half Sq. Triangles  
31505-11



FABRIC #17-¼ yd  
Half Sq. Triangles  
31505-12



FABRIC #18-¼ yd  
Half Sq. Triangles  
31505-13



FABRIC #19-¼ yd  
Half Sq. Triangles  
31505-19



FABRIC #20-¼ yd  
Half Sq. Triangles  
31506-13



FABRIC #21-¼ yd  
Half Sq. Triangles  
31506-15



FABRIC #22-¼ yd  
Half Sq. Triangles  
31506-17



FABRIC #23-FQ  
Setting Triangles  
31502-11



FABRIC #24-¾ yd  
Binding  
31502-12



FABRIC #25-¾ yds  
Outer Border  
31500-13



BACKING -7 yds

Betsy Chutchian developed a passionate interest in fabric, quilts, sewing and history as a child. After graduation from the University of Texas at Arlington in 1980, Betsy received an antique quilt top made by her paternal great grandmother and great aunt and taught herself to quilt.

Betsy began teaching quilting in 1990 and continues to enjoy teaching and sharing her passion for reproducing 19th century quilts. She is the author of several books with The Kansas City Star, *Gone to Texas, Quilts from a Pioneer Woman's Journal, Lizzie's Legacy, Just Treats, No Tricks* and is co-author of *History Repeated, Block Exchange Quilts by the 19th century Patchwork Divas*. Betsy is co founder of the 19th Century Patchwork Divas, a block exchange group dedicated to 1800's reproduction fabric.

Betsy lives in Grand Prairie, Texas with husband, Steve.

To learn more visit

[betsysbestquiltsandmore.blogspot.com](http://betsysbestquiltsandmore.blogspot.com)



MODAFABRICS.COM  
PS31500 — SUGGESTED RETAIL \$6.00